



S!M PATI®

Installation manual

S!MPATI® Service for S!MPATI® 4.70

Imprint

Installation manual für SimpatiService für Simpati 4.70

Original instructions

Document-ID: en 2020.09

All of the trademarks and brand names mentioned in the operating manual are the property of the respective manufacturer/owner.

TABLE OF CONTENTS

CHAPTER 1 INTRODUCTION AND GENERAL INFORMATION

1.1 Finding your way around	5
1.1.1 Symbols	5
1.1.2 Symbols	5
1.2 Warranty	5
1.3 License rights	6
1.4 Application and usage	6
1.5 Safety instructions	6
1.6 Service hotline	6

CHAPTER 2 INSTALLATION AND CONFIGURATION

2.1 Installing »SimpatiService«	7
2.2 Simpati 4.70 environment	10
2.2.1 Information about desktop shortcuts	10
2.2.1 Information about Simpati 4.70 system processes	11
2.2.1 Revising the »SimpatiService« startup type	11
2.3 Changing the password	13
2.3.1 Changing the password in »SimpatiService«	13

1 INTRODUCTION AND GENERAL INFORMATION

Prior to installation:

- ▶ Before installing the **Simpati 4.70** software, please read all of the instructions in this operating manual, the operating manual for the chamber and its controller.
- ▶ As the operator, issue appropriate operating guidelines on the basis of this operating manual. Take the relevant local and plant-internal conditions and the language of the operating personnel into account in doing so.

1.1 Finding your way around

1.1.1 Symbols

Explanation of the signs used in this operating manual:

- Items in a list are indicated by a dash.
- ▶ Instructions for the user and operator are indicated by a triangle.
- Cross-references are indicated by an arrow.

1.1.2 Symbols

The signal words and symbols used in this operating manual have the following meanings:



DANGER

Failure to comply with the directions results in death or severe injury.



CAUTION

Failure to comply with the directions can result in minor injury.

NOTICE

Failure to comply with the directions results in property damage.

1.2 Warranty

Any warranty services are dependent on the immediate return of the completed warranty reply form and on full compliance with the requirements specified. The warranty is limited to the replacement of the software package, all other claims are herewith excluded.

1.3 License rights

The software is issued with a license for a single workstation.

Corresponding additional licenses are required if multiple chambers are in operation.

Additional licenses are available through our service center.

1.4 Application and usage

This software can be used to control a maximum of 99 chambers with various control methods.

1.5 Safety instructions



DANGER

Disregarding the operating manual

Failure to comply with the instructions in the operating manual for the chamber and its controller may result in death or serious injury.

- ▶ Follow the instructions.
-

1.6 Service hotline

Telephone number if service is required: +49 180 5666556

Documentation in *.pdf format

The operating manual can be read using any standard PDF reader. The operating manual is included on the enclosed CD.

2 INSTALLATION AND CONFIGURATION

2.1 Installing »SimpatiService«

Prerequisite: **Simpati 4.70** has to be installed.

Installing the service:

- ▶ Run „SimpatiService_Setup.exe“.
- ✓ Installation of the service starts.

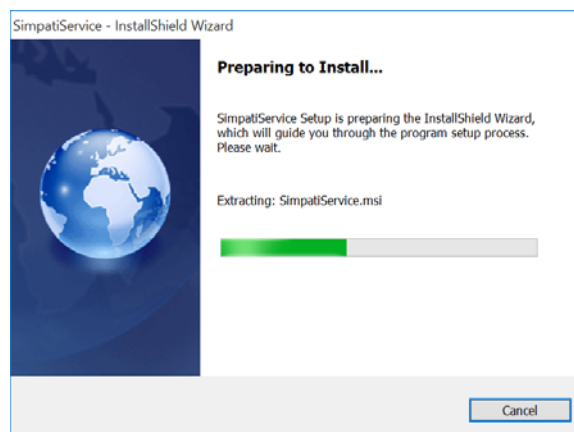


Fig. 2-1: Installation of **SimpatiService**

- ▶ Enter the logon information for the »Simpati« user.
 - ▶ If the user has yet to be created, select »New User Information«.
 - ▶ Enter logon data for a new user.
 - ▶ Specify a password.
 - ▶ Select **OK** and confirm.

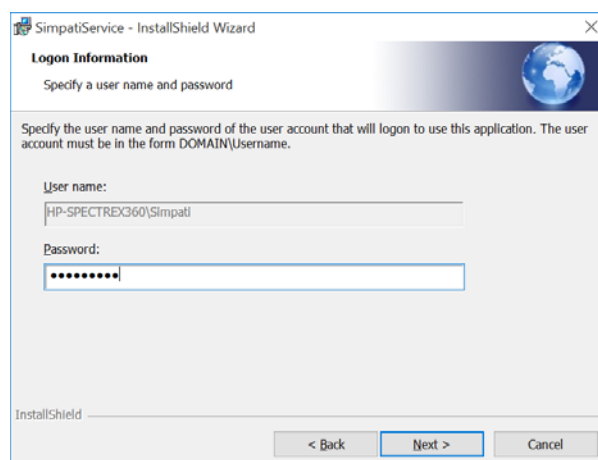


Fig. 2-2: Logon information

2 Installation and configuration

2.1 Installing »SimpatiService«

The »Simpati« user is created with the password specified.

If the **Simpati web** application was installed prior to this, the »Simpati« user was already created and just the password is prompted.

The password for the »Simpati« service user must be changed in a timely manner before the time that the validity expires because failing this the service does not start automatically after the expiration of the password. As an alternative to this, the »Simpati« user can be configured so that his password never expires.

- ▶ Once the logon information has been successfully entered, select **Next** and continue.
- ▶ Select **Install**.

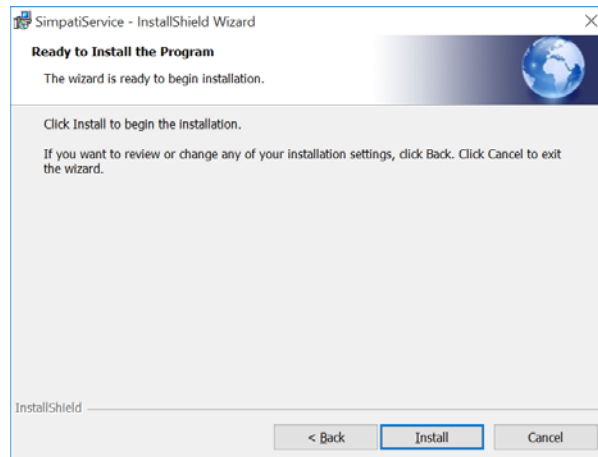


Fig. 2-3: Starting the installation of **SimpatiService**

When using **Simpati TimeLabs** and **SimpatiService** at the same time, **Simpati TimeLabs** must also be run with the user »Simpati«

- ✓ The installation is carried out. Once the installation has been successfully completed, a message appears.
- ▶ Select **Finish**

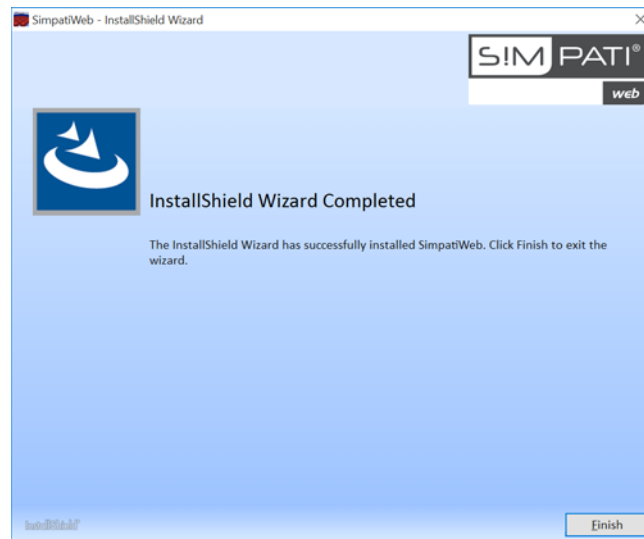


Fig. 2-4: Installation successfully completed

- ✓ The corresponding shortcuts are created on the desktop → 2.2 »**Simpati 4.70 environment«** (page 10).

2.2 Simpati 4.70 environment

2.2.1 Information about desktop shortcuts

After the installation is completed in its entirety, the following shortcuts are displayed on the desktop:

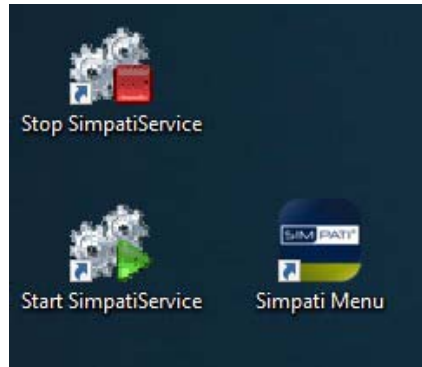


Fig. 2-5: Desktop shortcuts

– **Start SimpatiService:**

The **Simpati 4.70** software and all **Simpati 4.70** background processes start up. Every program started as a service runs hidden in the background.

– **Stop SimpatiService:**

Stops all **Simpati 4.70** background processes.

– **Simpati Menu:**

The user interface main menu is opened. The software communicates with the background processes.

The password specified during the installation is prompted on initial startup.

2.2.1 Information about Simpati 4.70 system processes

Simpati 4.70 system processes that are running are listed in Task Manager. Depending on the particular access rights, every hidden background process is displayed here as well.

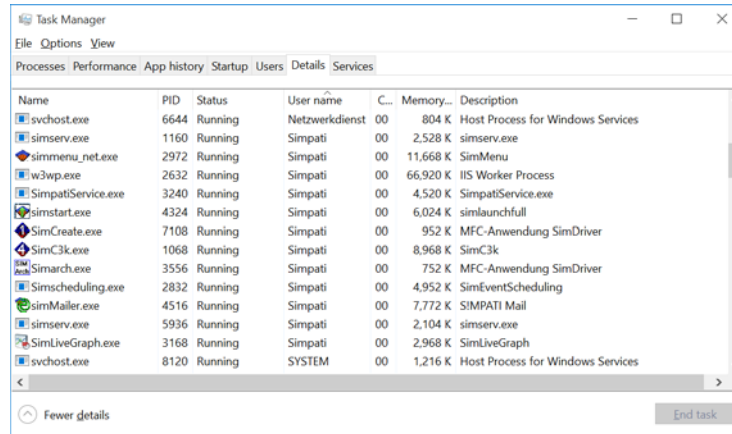


Fig. 2-6: List of the system processes in Task Manager

From Windows 8/Server 2008, the list of the system processes are displayed via the »Details« tab.

If the **Simpati web** application or **SimpatiService** was installed, sorting the process list by user is recommended. The processes are executed within the context of the »Simpati« user.

2.2.1 Revising the »SimpatiService« startup type

If **SimpatiService** was installed, then **Simpati 4.70**, including all of the background processes, starts up with Windows automatically. Then following a restart of the operating system, **Simpati 4.70** establishes communication with the equipment automatically. The **Simpati 4.70** background processes resume their tasks again (e.g. archiving).

The **SimpatiService** startup type can be revised.

Revising the »SimpatiService« startup type:

- ▶ In Windows select »Control panel« → »All control panel elements« → »Administration« → »Services«.
- ▶ Right-click on **SimpatiService** and call **Properties**.

2 Installation and configuration

2.2 Simpati 4.70 environment

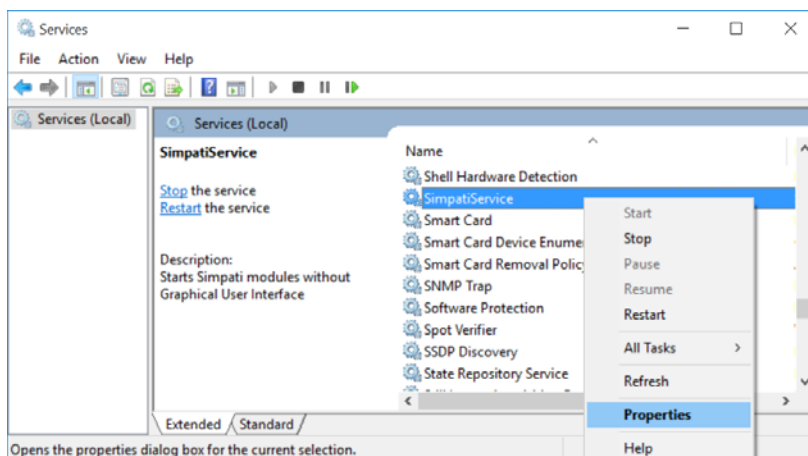


Fig. 2-7: **SimpatiService** on the control panel

- ▶ Under the **General** tab → **Startup type** adjust the start behaviour accordingly.

- **Automatic (Delayed Start):**

Simpati 4.70 starts, including all of the background processes, once every service configured with the **Automatic** startup type has been started.

- **Automatic:**

Simpati 4.70, including all of the background processes, starts up with Windows automatically.

- **Manual:**

Simpati 4.70 and the background processes are not started automatically. Startup can be effected manually later on via the **Start SimpatiService** shortcut on the desktop → 2.2 »**Simpati 4.70 environment**« (page 10).

- **Disabled:**

Prevents **Simpati 4.70** and the background processes from starting up automatically. Manual startup is also prevented by this setting.

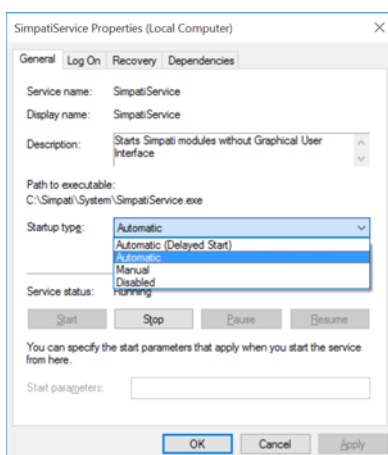


Fig. 2-8: Revising the **SimpatiService** properties

- ▶ Confirm the selection with **OK**.

2.3 Changing the password

If the password is changed by the (local) »Simpati« user after the installation, then the new password has to be updated in **SimpatiService**. If **Simpati web** is installed, the new password has also to be updated in the Internet Information Service (IIS) accordingly.

2.3.1 Changing the password in »SimpatiService«

These steps need to be performed only if **SimpatiService** has been installed.

Changing the password:

- ▶ In Windows select »Control panel« → »All control panel elements« → »Administration« → »Services«.
- ▶ Right-click on **SimpatiService** and open **Properties**.

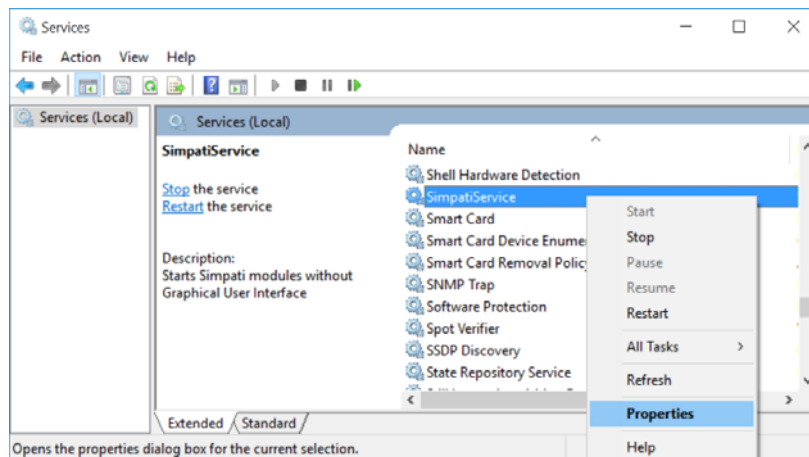


Fig. 2-9: **SimpatiService** on the control panel

- ▶ Select the **Logon** tab.
- ▶ Enter the new password under **Password**.
- ▶ Repeat the entry under **Confirm password**.

2 Installation and configuration

2.3 Changing the password

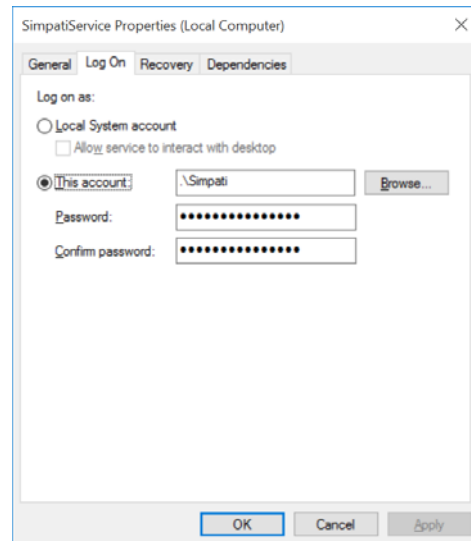


Fig. 2-10: Changing the password in **SimpatiService**

- ▶ Confirm the change with **OK**.

Passionately innovative.

We work in partnership to support companies in research, development, production and quality assurance. With 22 companies in 15 countries at 40 locations.

weisstechnik

Test it. Heat it. Cool it.



Environmental Simulation

The first choice for engineers and researchers for innovative, safe environmental simulation facilities. In fast motion, our test systems can simulate all the influences in the world as well as for instance in space. In temperature, climate, corrosion, dust or combined stress tests. With a very high degree of reproducibility and precision.



Climate Technology, Air Dehumidification, Clean Rooms

As the leading provider of clean rooms, climate technology and air dehumidification, we consistently ensure optimal climatic conditions for people and machines. For industrial production processes, in hospitals, mobile operation tents or in the field of information and telecommunications technology. From project planning to implementation.



Heat Technology

Experienced engineers and designers develop, plan and produce high-quality, reliable heat technology systems for a broad range of applications from heating and drying cabinets to microwave systems and industrial furnaces.



Clean Air and Containment Systems

With decades of experience and know-how, we guarantee the most sophisticated clean air and containment solutions. Our comprehensive and innovative range of products includes barrier systems, laminar flow systems, safety workbenches, isolators and airlocks.

Weiss Umwelttechnik GmbH

Greizer Straße 41-49
35447 Reiskirchen/Germany
T +49 6408 84-0
info@weiss-technik.com

Vötsch Industrietechnik GmbH

Beethovenstraße 34
72336 Balingen/Germany
T +49 7433 303-0
info.voetsch@weiss-technik.com

www.weiss-technik.com